

# ECONOMIC AND FISCAL IMPACTS

## OF THE BUCKEYE LAKE 2030 COMMUNITY VISION

### ECONOMIC IMPACT FOR RESIDENTS

#### 3,900 - 6,300 NEW JOBS

will be created

- **2.6 - 4.3 percent** increase in employment
- **\$104 - \$168 million** in annual earnings
- **\$400 - \$650 million** in annual output
- **1,200 - 1,500** new households

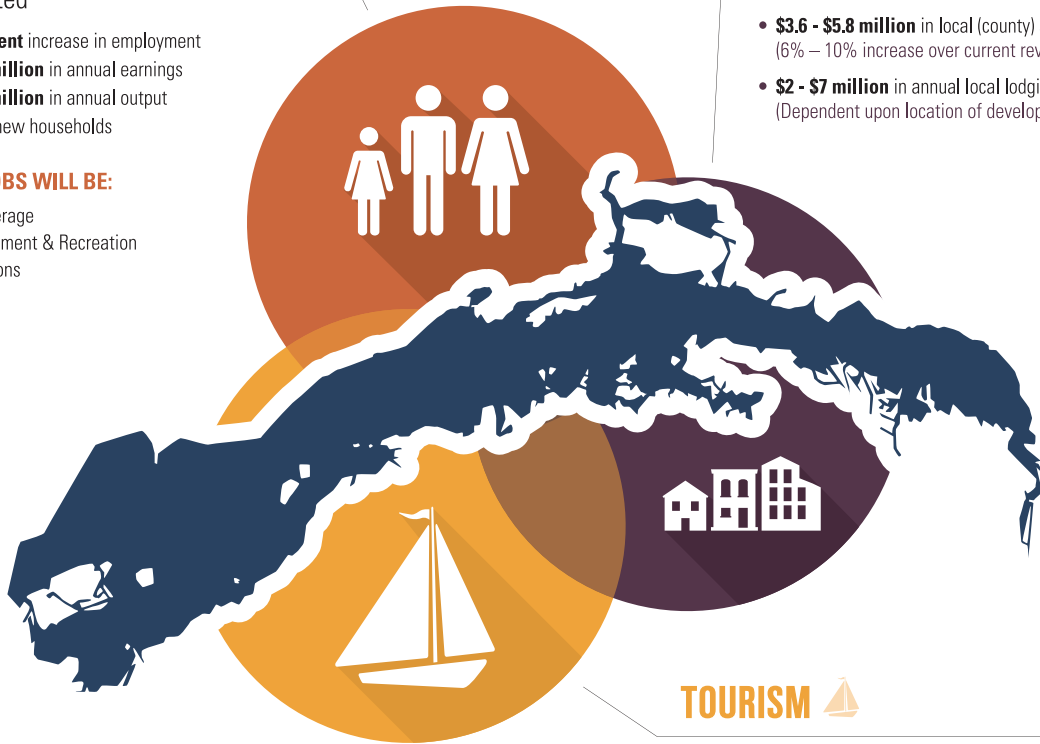
#### 3 OUT OF 4 JOBS WILL BE:

- Food and Beverage
- Arts, Entertainment & Recreation
- Accommodations
- Retail Trade

### FISCAL IMPACT FOR COMMUNITIES

**\$11 - \$17 MILLION** in annual direct property tax from new lodging and housing

- **\$3.6 - \$5.8 million** in local (county) sales tax revenues per year (6% - 10% increase over current revenues)
- **\$2 - \$7 million** in annual local lodging tax revenues per year (Dependent upon location of development/redevelopment)



### TOURISM

#### **\$240 - \$390 MILLION**

in direct annual lodging revenues and visitor spending

- **2,800 - 4,300** additional lodging rooms
- **2.5 - 4.3 million** visitors per year



The Buckeye Lake region will see approximately  
**250% - 400% GROWTH BY THE YEAR 2040**

